
COMPANY PROFILE



Scolmore Dubai

Office 1803, Lake Central Tower, Al Abraj Street, Business Bay, Dubai, UAE

T: +971 4589 6552

E: admin@scolmoredubai.com

www.scolmoredubai.com

Introducing Scolmore

Scolmore Group is a UK based family owned manufacturer with its headquarters in Birmingham, England. Scolmore Group supplies a wide range of quality electrical accessories (that are ideally suited to the living space applications your company is involved in). Since our incorporation in 1989 Scolmore Group has become a significant force in the wiring devices market. We are very proud of our track record of listening to our customer needs and providing the right solution every time.

Scolmore product ranges are always based around innovative concepts and are aimed at providing installation and cost benefits. This is achieved by reducing installation time and ensuring minimal maintenance requirements. Within the ranges there are several unique features and benefits including the following.

- **Wiring Accessories** – modular format allows interchanging of switch modules on standard products, offering significant savings on installation costs and labour time as there is no need for grid switch on lighting circuits. (This feature also applies to all decorative ranges)
- **Moulded ranges** (Mode, Curva, and Polar) - are anti-microbial certified for use in the medical sector. Manufactured using Urea Formaldehyde, the moulded ranges inhibit the growth of infectious diseases (including MRSA, E.Coli, Salmonella and Klebsiella Pneumoniae).
- **Inels** (wireless control systems) - offers complete control and regulation of your heating and lighting meaning energy is only consumed when needed- reducing energy bills and carbon footprint for end users. Inels controls Shutters, blinds, gates, latches and garage doors for complete wireless management in domestic & commercial environments.
- **Flameguard** – A fire rated product offer, incorporating both downlights and cavity wall back boxes fully compliant with all current legislation.

These features and benefits have enabled Scolmore to gain business on many projects in Housing (both private and social), Hotel & Leisure, Education (University Campus & Student Accommodation,) Hospitals and Stadia throughout the UK.

The products are supported by a dynamic business model, including a dedicated export department which coordinates and supports our overseas partners.

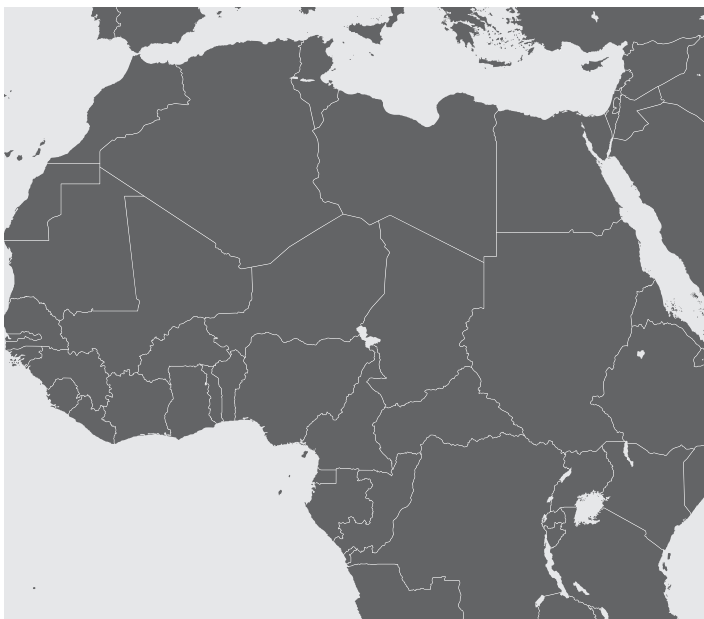
Introduction to Exports

Scolmore Group began its exports operations in 2010. After many years as a leading manufacturer and supplier to the UK market, Scolmore Group began expanding its activities overseas. With all our products based on British Standards, Scolmore Group currently exports its quality wiring accessories all over the world.

Since 2010 we have been able to build a network of partners within British Standard Countries. Our network of partners spans across the Middle East, Africa, the Mediterranean and the Caribbean. Scolmore Group is committed to supporting our partners across the world. Through mutual support and flexibility, we have been able to develop a professional, motivated and dedicated distribution network that is committed to making Scolmore Group a strong player in the overseas market.

Our operations cover two distinct industries. The first sector Scolmore Group operates in is the residential sector. Scolmore products are used in Apartment and Villa projects. The second area we operate in is the commercial sector where our products have been used in projects such as Schools, Hotels, Hospitals, Airports and Government Ministries.

We are committed to the long term growth and sustained success of our product lines overseas.



Scolmore Group exhibit and promote our product ranges at many trade shows across the Middle East such as; Middle East Electricity, Project Qatar, Bahrain Arabian MEP exhibition, Kuwait Big 5, Archibuilt Nigeria and more.

Trade Shows

Scolmore Group's presence at these trade events are part of the group's on-going commitment to the development of its brands and product ranges in the Middle East and Africa. These events are important platforms for Scolmore Group to showcase their innovative products to a wider audience.

Middle East Electricity 2013



Scolmore®
..... D U B A I

Scolmore®
..... GROUP

CLICK®

esp

UNICRIMP®



Manufactured to the highest quality levels in our industry

Manufacturing

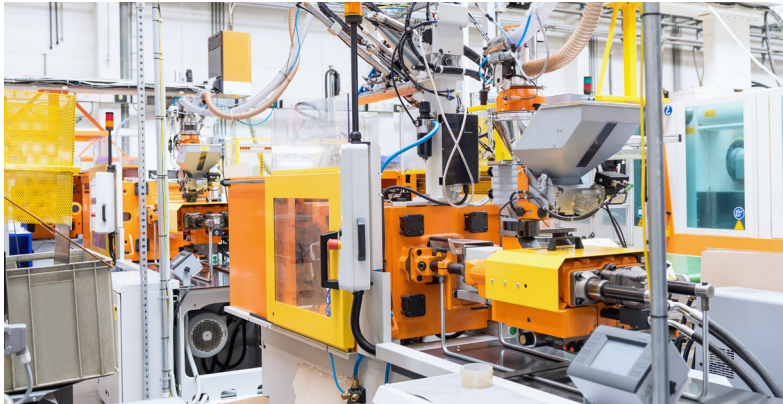
Manufactured to the highest quality levels in our industry. Our New Product Development Team are constantly tracking market trends, building regulations and approval standards so we can increase our product range to meet the ever-changing needs of our customers.

Scolmore® prides itself on the innovative new products we are constantly developing which enhance the comprehensive ranges available. Building Information Modelling (BIM) is changing how buildings, infrastructure, and utilities are planned, designed and built.

Scolmore® can provide all this information with direct access to our new BIM library. We have made things easy for you and grouped all of our technical sheets into Technical Specification Brochures. Please visit www.scolmore.com and download the brochures you require.

Accreditations

All Scolmore® products are manufactured to the highest quality levels in our industry and comply with all relevant British and European standards. Guarantees of up to 20 years against materials or manufacturing faults show how confident we are in our product design and quality. All relevant documentation is available to prove that we are fully compliant with all the required standards.



Introduction to Scolmore® Group



About Scolmore®

Since our incorporation in 1989 we have become a significant force in the electrical accessories market. We're proud to be a British based, family-run business, with an excellent track record of listening to what our customers need and providing the right solution every time.



Wiring Accessories

A unique range of electrical products for all domestic electrical wiring needs. Since its introduction the Click® brand of domestic electrical wiring accessories has become synonymous with innovation, quality and unprecedented value for money.



ESP® are a leading safety and security product specialist offering a comprehensive range of electronic security and fire detection solutions, meeting the requirements of installers and contractors. The range includes CCTV, video door entry, access control, fire protection and emergency lighting.



Lighting Accessories

A comprehensive selection of indoor and outdoor lighting. A unique selection of some exciting lighting products ranging from domestic to commercial applications and market leading fire and acoustic rated light fittings.



All products within Unicrimp® are manufactured under stringent quality control systems and are fully compliant with the very latest industry regulations. The range includes cable ties, crimp terminals, PVC tape, copper tube terminals, cable clips, and brass and nylon glands



Sangamo are a UK manufacturer, renowned for their Round Pattern Time Switches, as well as time clocks, heating controls and thermostats. For over 60 years all of the products have been manufactured in their UK factory to the same high standard.



Click®

WIRING ACCESSORIES

The Click® accessory range has something for everyone. From the basic functional moulded switch through to a sophisticated wiring solution found on one of our multi-tier Minigrid® plates and everything in between.



deco+
PLUS



All Deco Plus® are available in 7 distinctive quality finishes: Antique Brass, Polished Brass, Polished Chrome, Satin Chrome, Black Nickel, Stainless Steel, Satin Brass.



deco®



All Deco® Plates are available in 9 distinctive quality finishes: Antique Brass, Polished Brass, Polished Chrome, Satin Chrome, Black Nickel, Pearl Nickel, Stainless Steel, Satin Brass and Georgian style Cast Brass.



define®



All Define® Plates are available in 5 distinctive quality finishes: Polished Chrome, Stainless Steel, Brushed Steel, Pearl Nickel and Black Nickel.



definity™



All Definity™ Plates are available in 6 distinctive quality finishes: Polished Chrome, Brushed Steel, Stainless Steel, Matt Black, White and Red.



GRIDPRO®



1-24 Gang GridPro® front plates available in most Click® wiring accessory ranges, with module finishes to match.



MODE®



A stylish, contemporary & flexible range of smooth profile wiring accessory solutions. The modular design of Mode® allows designers and installers unprecedented flexibility in creating dedicated wiring solutions.



Part M Range™



The Click® Mode range has recently been expanded to include a range of anthracite grey finished accessories to comply with current building Regulations Part M.



MINIGRID®



The fully interchangeable Minigrid® modules are fitted as standard into our Click®: Deco Plus®, Mode®, Define®, Deco®, Definity™ and Metal Clad ranges.



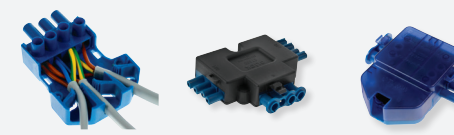
new media™



The New Media™ range encompasses a wide range of media and power modules providing the designer and installer a host of solutions for all manner of media cabling problems.



flow™



The Flow™ range has been designed specifically to help contractors create more complex lighting installations quickly, easily and safely.



seera®



A competitively priced range of white moulded products. Manufactured using polycarbonate, known for its strength and durability the range has concealed screws as standard.



Upgrade your home...

Click® Smart wireless control and automation products by Scolmore® enable you to upgrade your electrical installation to provide added security, energy saving, comfort and control without the need for intrusive and unwanted disturbance to your décor.

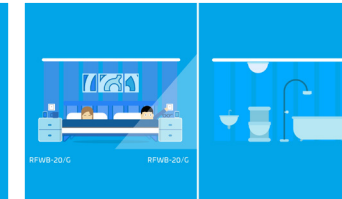
Retro-fit and affordable, the products can be installed to transform any building to provide numerous benefits to suit all manner of requirements, both practical and aesthetic, that will bring added value to those using the building, whether it be a home or a business.

Uses for Click® Smart:

1. Add an additional switch to an existing light without the need for any cabling.

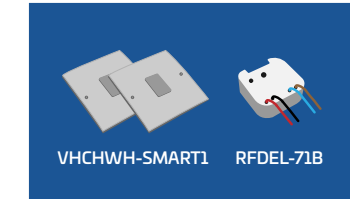


Just fit the RFSAI-61B into the light you wish to activate and the RFWB-20/G switch to a convenient place.

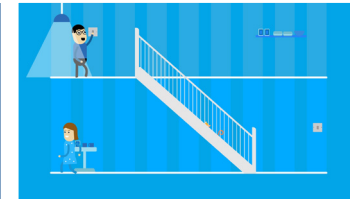


You can now easily turn the bathroom light on from the comfort of your bed.

3. Two-way dimming control from separate locations (wired).

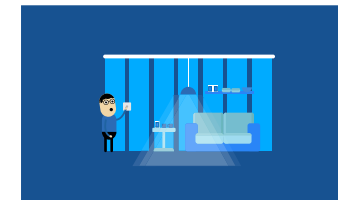


Make your home smarter with a RFDEL-71B and two retractable switches.

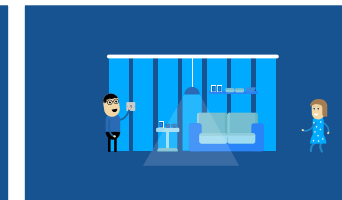


This will allow you to dim from both locations, meaning no more risky trips down the stairs in the dark.

2. Fix flickering by using a retractable switch instead of a rotary dimmer (wired).

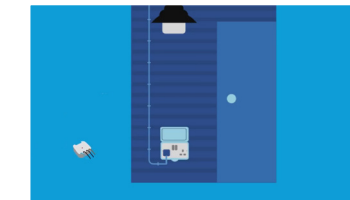


When you switch on one of your lights with a rotary dimmer do you experience continuous flickering?

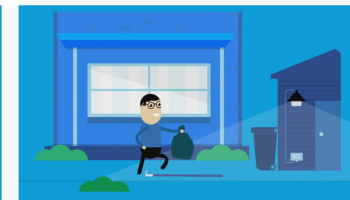


Replace the wired rotary dimmer with the retractable switch and add the RFDEL-71B to the light fitting. No more flickering.

4. Adding a switch to an outdoor socket for multiple appliances



Simply add the RFSAI-61B to the socket you wish to control. Then add the RFWB-20/G switch to the convenient place.



By adding a smart switch you can now control anything plugged into the socket.



SECURITY
SIMULATED OCCUPANCY
OUTDOOR LIGHTING



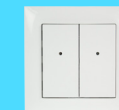
CONTROL
IN THE HOME
IN THE GARDEN



ENERGY SAVING
LIGHTING
EXTERNAL POWER



COMFORT
LIFE'S LITTLE LUXURIES
ASSISTED LIVING



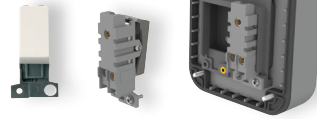
From Simple Switching... To Complete Automation

AQUIP66®

IP66 Weatherproof Sockets & Switches

UV protected, robust construction and weatherproof (IP66), AQUIP66® offers high level of protection against ingress of water jets and dust.

MINIGRID®



METAL CLAD

Robust Construction

Electrophoretically coated plates and back boxes provide a durable and long lasting heavy duty finish to this attractive range of products. All switch products are of modular construction.

essentials™

The essentials™ product group is just that – ESSENTIAL

The essentials™ group of products comprises of those items that you will find in a wide variety of installations, such as junction boxes, back boxes and long fixing screws.



FlameGuard®
system

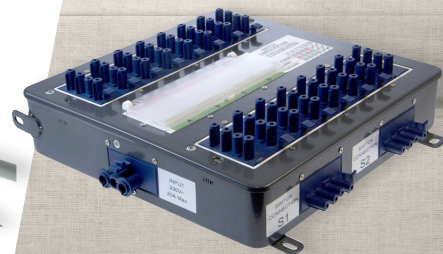
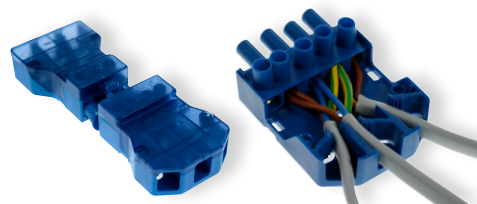
Metal Dry Lining Back Boxes

Unique spring loaded lugs with a substantial amount of cable entries and earth terminal fitted as standard. Suitable for installation into double skimmed plaster board and fire tested to 30,60 & 90 minute rating.

flow™

Connectors & Management Boxes

The lighting management system is a range of products under the Flow™ brand which are specifically designed to help contractors create more complex lighting installations. The product range allows quick connection, configuration and re-configuration of circuits, primarily for lighting.



essentials™

Essentials floor accessories

New Media™ Floor Plates are ideal for protecting sockets and switches from damage along with having a stylish appearance.

Scolmore® International Product Warranties

All our products are manufactured under stringent quality control systems and are fully compliant with the most up to date industry regulations.



TEN YEAR

10 YEAR

PRODUCT GUARANTEE

Deco Plus®, Deco®, Define®, Definity™ and Metal Clad accessories.



THIRTY YEAR

30 YEAR

PRODUCT GUARANTEE

Mode® accessories



TWO YEAR

2 YEAR

PRODUCT GUARANTEE

Electronic parts within New Media™ and Dimmers from all ranges



FIVE YEAR

5 YEAR

PRODUCT GUARANTEE

Aquipp 66®



FIVE YEAR

5 YEAR

PRODUCT GUARANTEE

Inceptor® Omni



TWO YEAR

2 YEAR

PRODUCT GUARANTEE

Inceptor® Nano® & Pico



THREE YEAR

3 YEAR

PRODUCT GUARANTEE

Inceptor® Evo



TEN YEAR

10 YEAR

PRODUCT GUARANTEE

Flow™



ONE YEAR

1 YEAR

PRODUCT GUARANTEE

Ovia® Lighting



TWO YEAR

2 YEAR

PRODUCT GUARANTEE

Transformers



ONE YEAR

1 YEAR

PRODUCT GUARANTEE

Click Smart



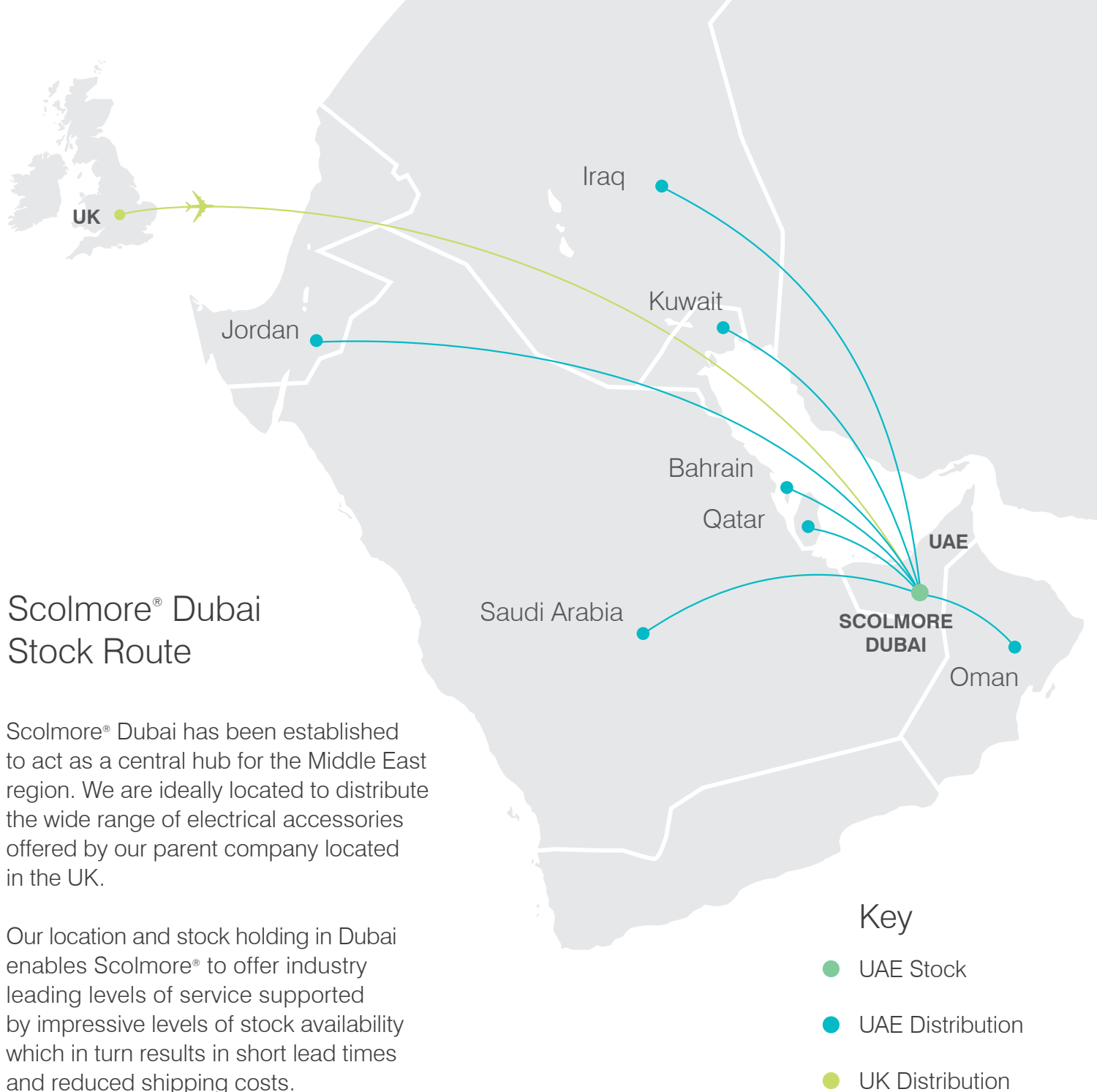
TEN YEAR

10 YEAR

PRODUCT GUARANTEE

Seera

Warranties subject to Terms and Conditions scolmore.com





Scolmore International
Electrical Trading LLC
Lake Central Tower, Office 1803,
Business Bay, Dubai, UAE

T: +971 4589 6552
E: admin@scolmoredubai.com

www.scolmore.com

EXP8000